

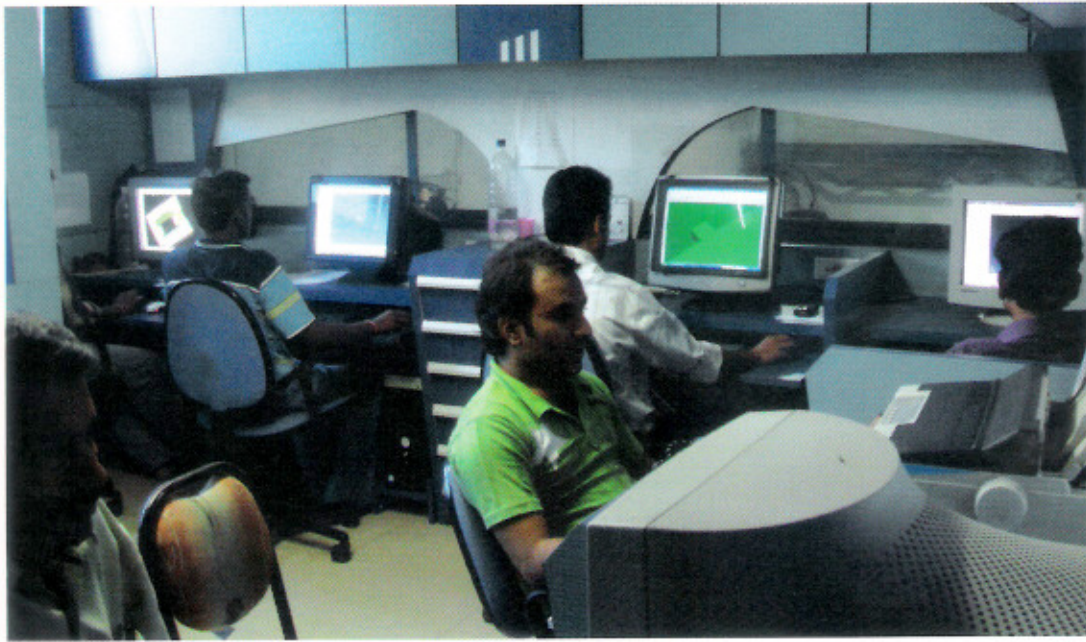
INJECTION MOULD

BLOW MOULD

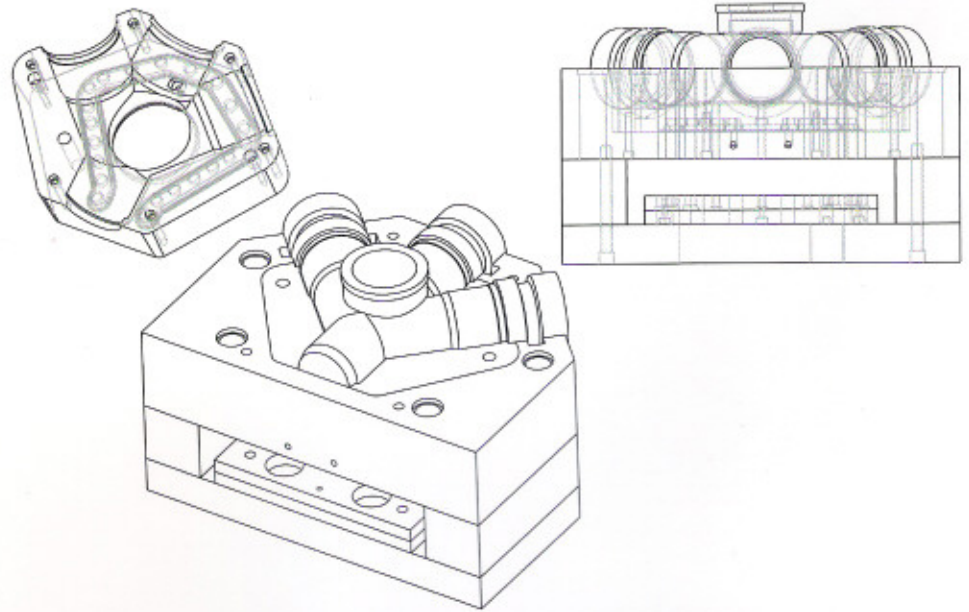
INVESTMENT DIE CASTING DIES

WE ALSO UNDERTAKE JOB WORKS ON CNC MILLING, CNC LATHE AND WIRE EDM

" QUALITY IS NEVER AN ACCIDENT, IT IS A RESULT OF TEAM EFFORT "



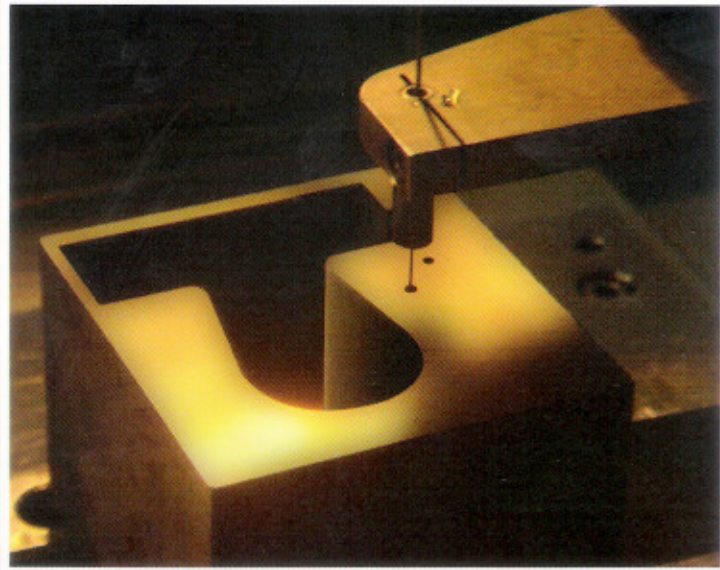
DESIGNING



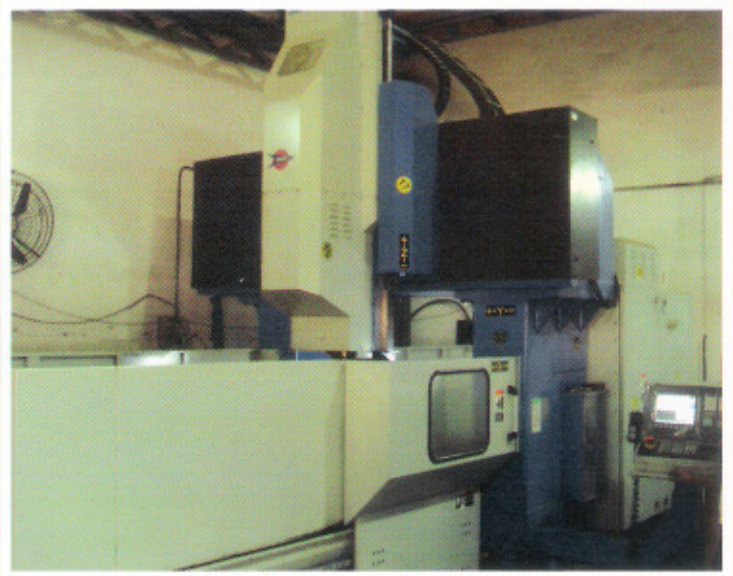
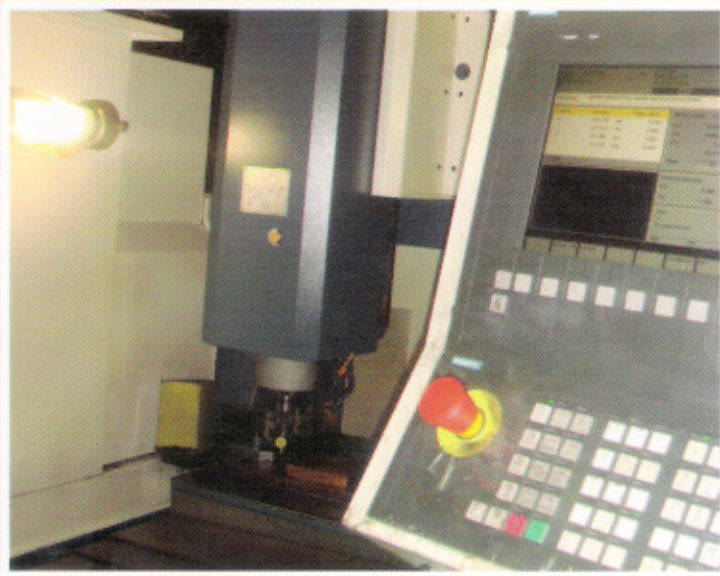
We design all the moulds at our end. The software which we are using for designing the moulds includes CAD-CAM and also for analysis for the same we use mould flow.

We have well qualified and experienced design team. Which has the ability of converting proto images to realistic moulds. This is one of our strongest part where the beginning of every mould starts.

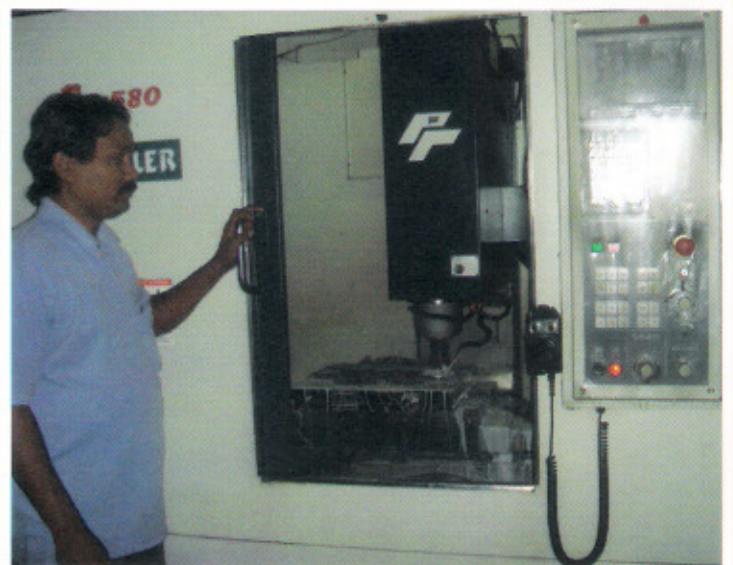
High End Machines



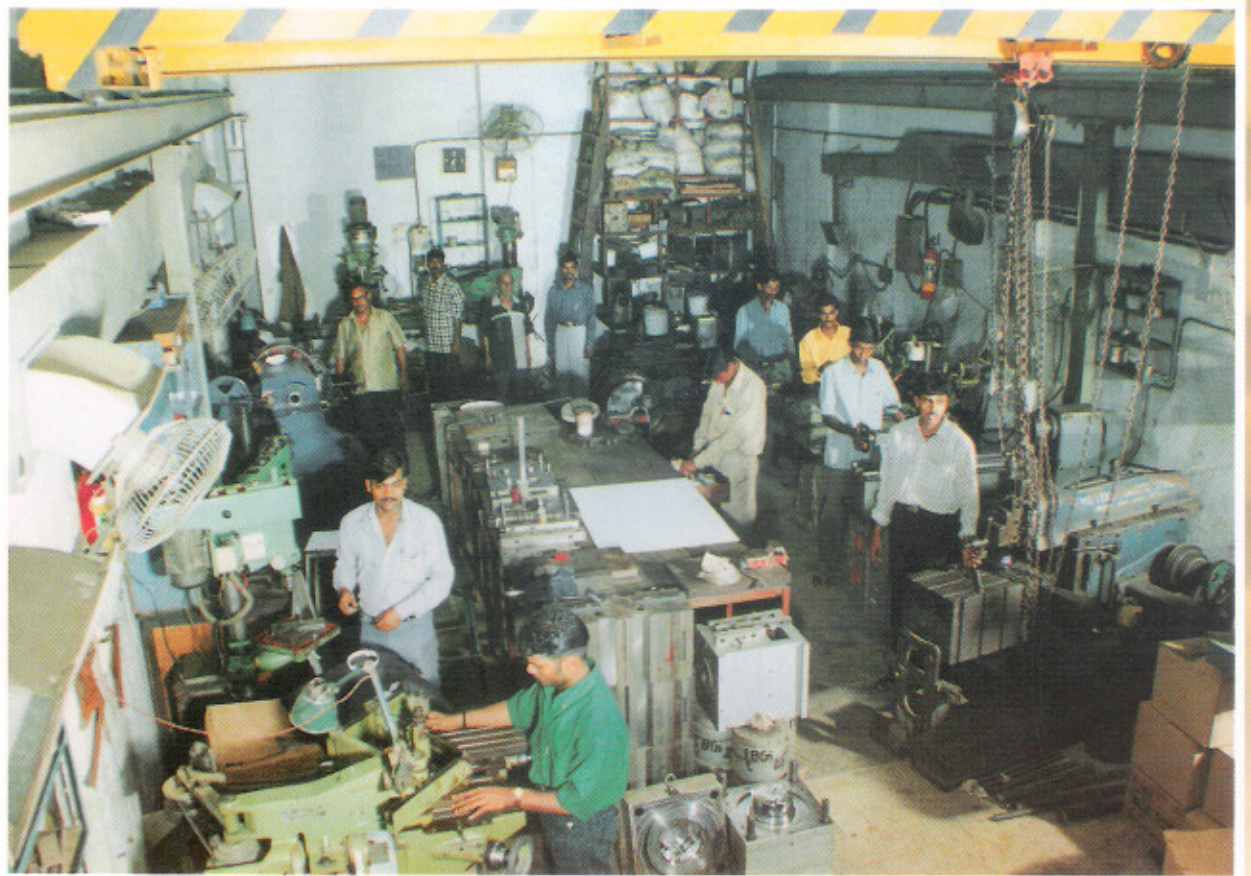
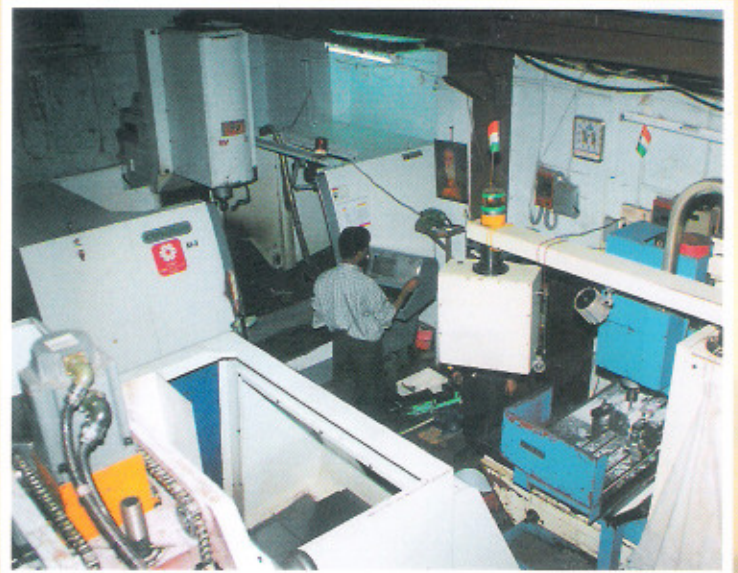
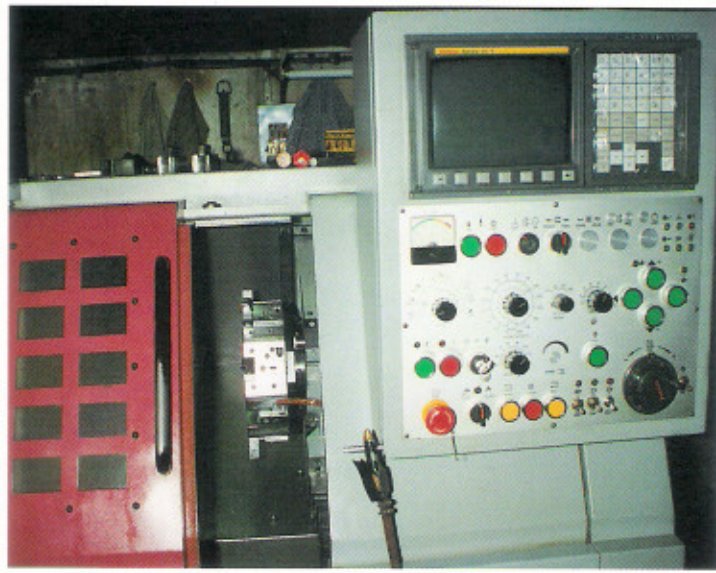
We have all size of machines from small to big with Spindle speed upto 25,000 rpm & feed rate programmable upto 10 metres. We have 5 CNC Vertical Milling Machining Centre, varying from 700 mm to 3000 mm in "X" axis, 400 mm to 2000 mm in "Y" axis, 450 mm to 1000 mm in "Z" axis, 2 Orbit Cut with "Z" NC EDM, 3 Wire EDM & Turning Centre.



HIGH
END
M/C



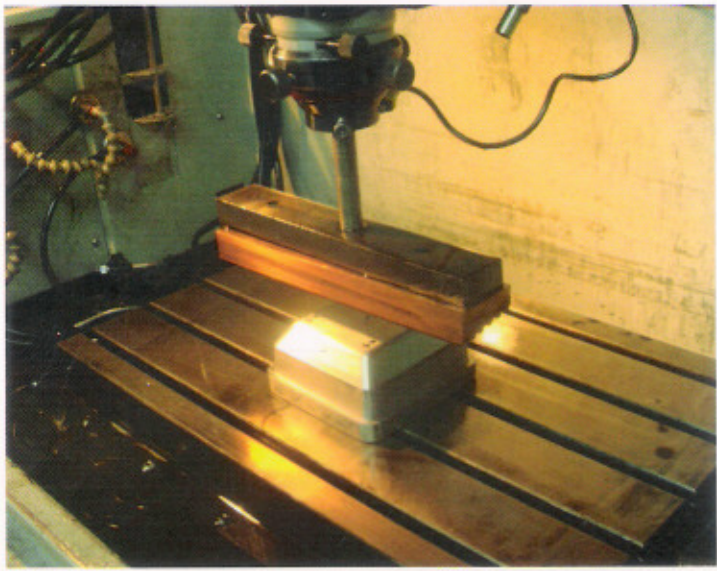
Shop Floor



Our Shop Floor is equipped with heavy duty cranes on all the areas of the tool room. Which avoids unsafe conditions and gives an advantage over unwanted wastage of non value added time. We have separate die maker tables for a group of die makers. Which lessens the confusion between two identical or different moulds.

SHOP FLOOR

List of Machines



LIST OF MACHINES IN OUR TOOL ROOM

- | | |
|---|-------------------------------|
| 1. Lathe machine 6 Feet | - 2 Nos Centre ht - 16" & 14" |
| 2. Lathe machine 4 Feet | - 3 Nos Centre ht - 12" & 8" |
| 3. Radial Drilling machine | - 3 Nos |
| 4. Drilling Machine Dia 1" | - 4 Nos |
| 5. Pento graph Machine 3D | - 1 No |
| 6. Surface grinder 10" x 20" | - 2 Nos |
| 7. Spark erosion Machine (Joe mars)
Taiwan made with orbit cut. | - 4 Nos |
| 8. Milling machine MMTR MITR | - 1 No |
| 9. Tool Grinder | - 1 No |
| 10. Bench Grinder | - 1 No |
| 11. Shaping Machine 24 Stroke | - 1 No |
| 12. Portable Grinder | - 1 No |

In this Tool Room we do all types of Moulds & Dies Manufacturing like Injection Moulds, Pressure Die Cuttings, Blow Moulds and all types of Round Moulds. etc.

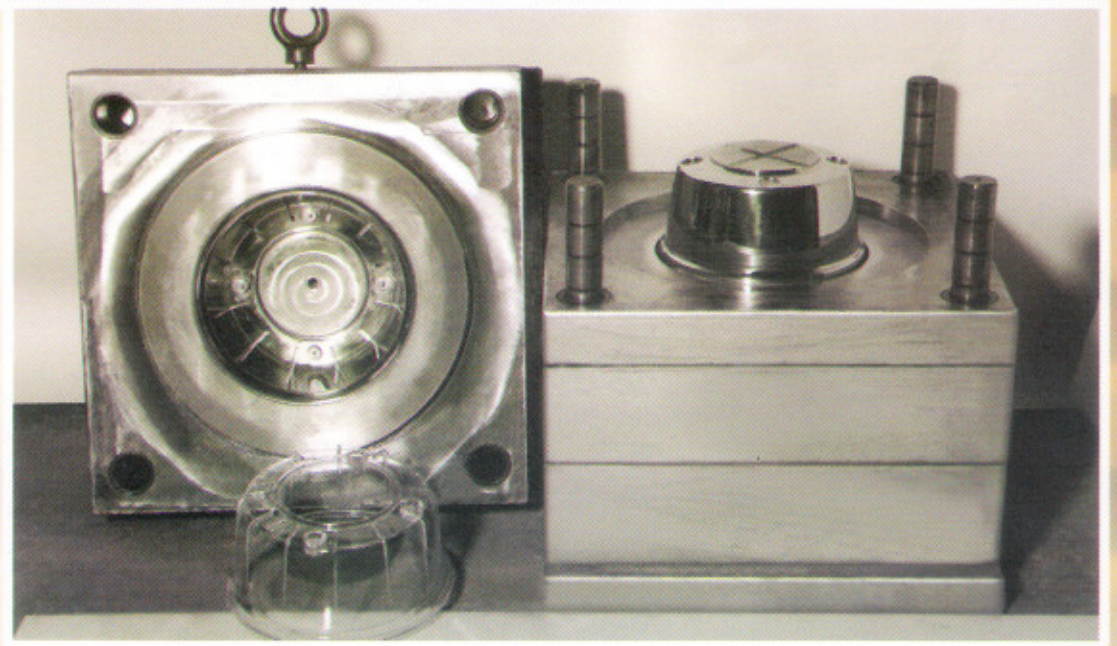
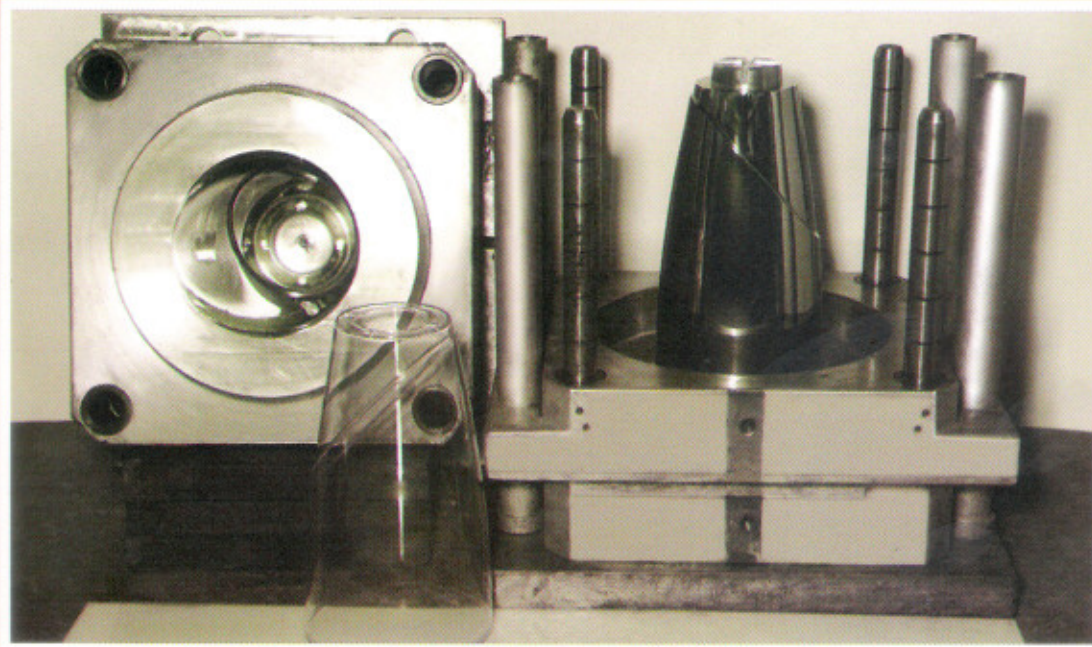
- | | |
|-------------------------------|-------------------------------|
| 1. Lathe Machine 10 feet | - 1 No. Centre ht - 16" |
| 2. Lathe Machines 8 & 4 feet | - 2 Nos. Centreht - 14" & 10" |
| 3. Radial Drilling Machine 1" | - 1 No. |
| 4. Surface Grinder 8" x 16" | - 1 No. |
| 5. Bench Grinder | - 1 No. |
| 6. Milling Machine | - 1 No. |

In this Tool Room we do all types of repairing of Moulds and make all types of Mould.

CNC MACHINES

1. FEELER 800 X 500 X 500 SIEMENS 810D - 8000 RPM
2. SFY 1000 X 500 X 500 SIEMENS 840D - 25000 RPM
3. FEELER 600 X 400 X 400 MITSUBISHI M 64 - 8000 RPM
4. SANCO 3000 X 2000 X 10,000 SIEMENS 840D - 10,000 RPM
5. JOEMARS WIRE EDM 450 X 300 X 250 - 3 Nos.
6. CNC LATHE (LMW, FEELER, HYUNDAI) - 3 Nos.

Recent Projects



These are two main highlights of our recent project, which was done for Lumos.

It was a single cavity mould.

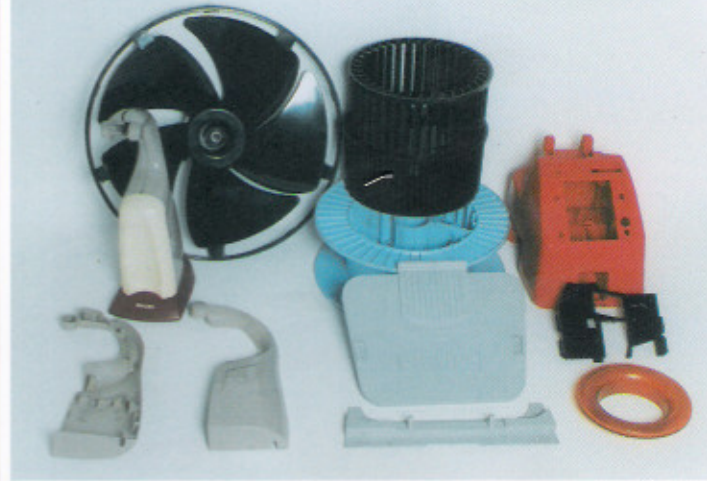
The component was first trial ok.

RECENT
PROJECTS

Pressure Die Casting Components



General Components



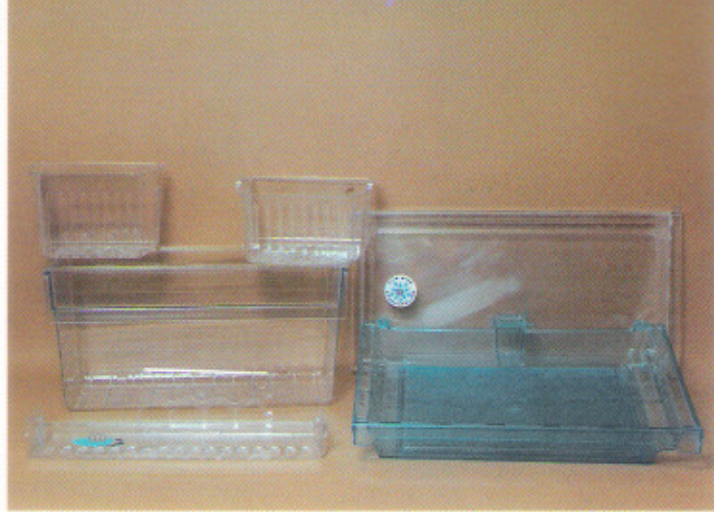
Components for Lighting Industry



Refrigerator Components



Refrigerator Clear Components



Oil & Paint Components



Om Enterprises

Unit No. 92, Gr. Floor,
Virvani Industrial Estate,
Off Western Express Highway, Goregaon (E),
Mumbai - 400 063, Maharashtra, India

Mob: +91 98210 62914

Tel: +91 22 28780688, 26850791

Fax: +91 22 66770655

Email: omenterprise@vsnl.net

Web: www.omenterprisemould.com